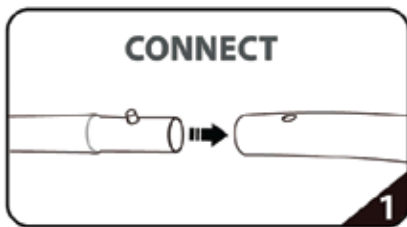
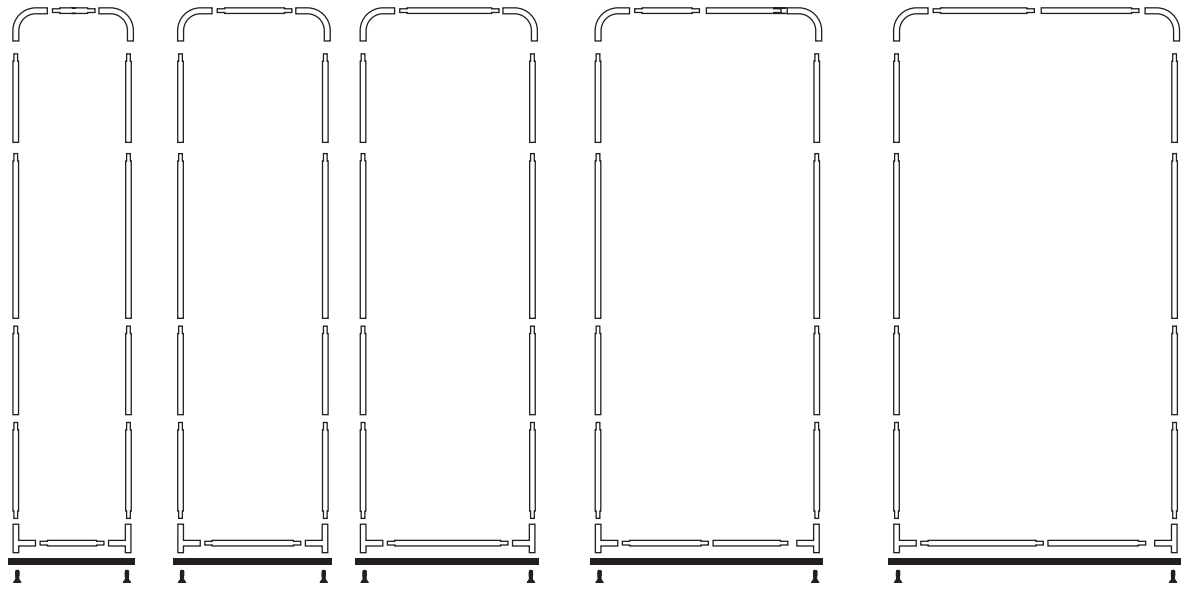
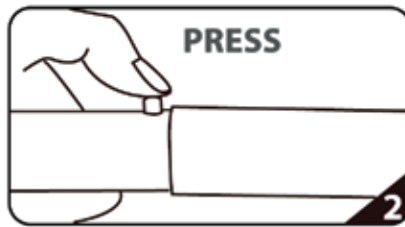


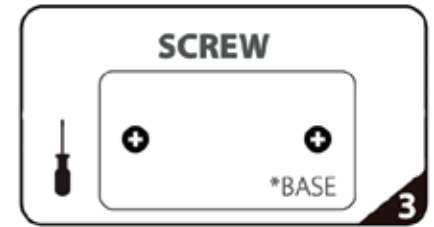
Tube Frame Banner Stands Set Up Instructions



Connect the sections of tubing that have letter stickers together.



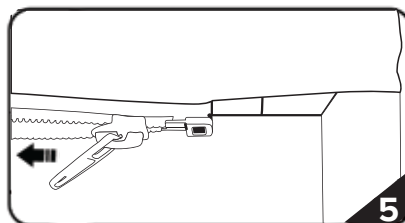
Some of the vertical pole sections may not have letter stickers, as they can be used in any position. In that case, connect an equal number of sections to the right and left sides to complete the frame. The number of pole sections will vary depending on the height and width of the display.



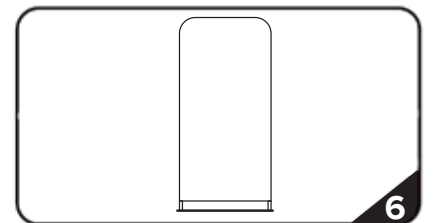
Using the included screw driver, attach the frame to the base with the supplied screws. Be sure to insert the screws into the base from the bottom, which is the side where the holes are tapered to allow the screw head to be flush with the base when fully tightened.



Cover the frame with the pillowcase graphic. For taller displays, lay the frame down to make this easier.



Use the zipper to close the pillowcase under the bottom cross bar. This will pull the graphic tight and ensure it stays in place.



Stand complete.

Some displays will include an optional horizontal support bar. While not required in most cases, it can be useful if the fabric graphic is tight enough to cause the sides of the frame to bow inward, so it's included in case it's needed. To use this support, ensure the left and right pole sections with holes for the support bar are used at the same height on each side, and are roughly in the middle of the display so that it can be most effective.