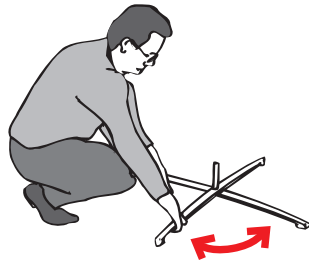


Expand FlagStand 1 Set-up Instruction (13 feet tall)



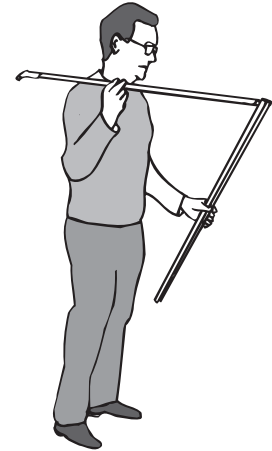
1. Open the carry bag and remove the weighted base



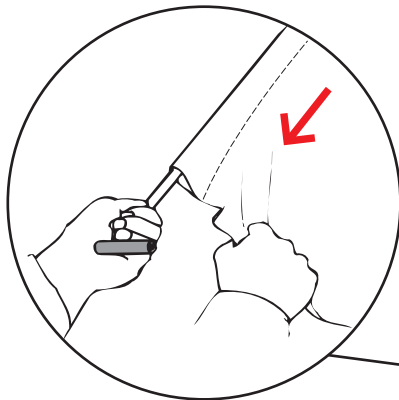
2. Open the weighted base form an "X"



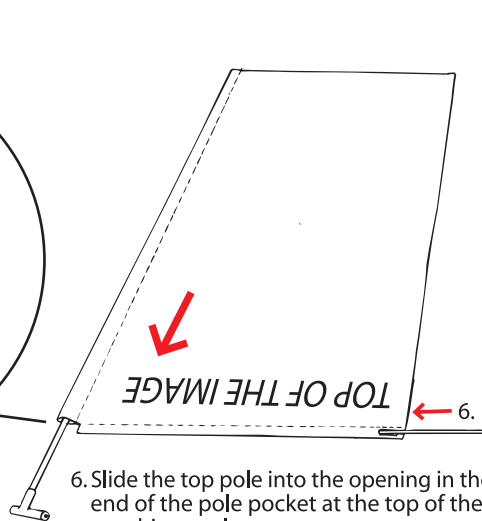
3. Add the additional weight on top of the base



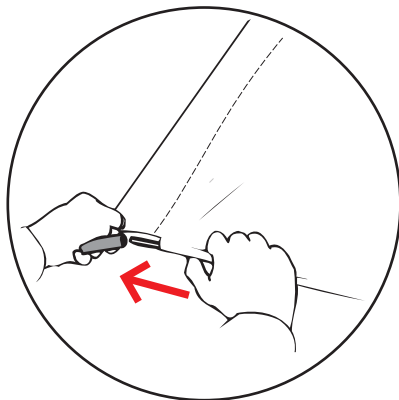
4. Unfold the vertical pole and align the green arrows



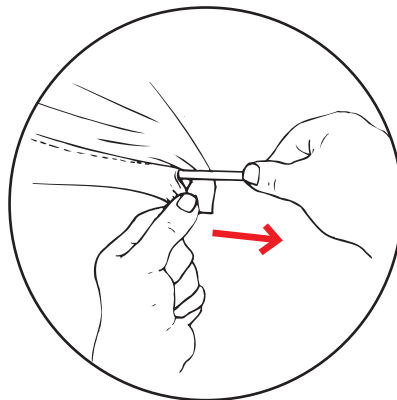
5. Slide the graphic up the vertical pole from the bottom



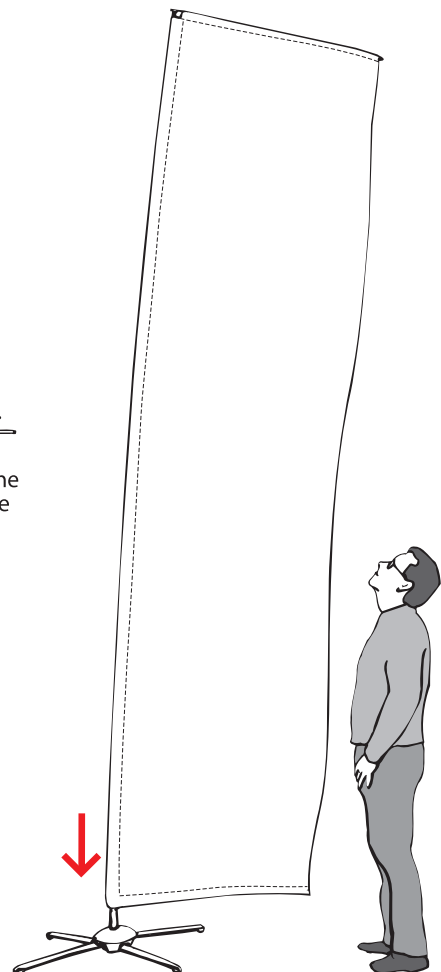
6. Slide the top pole into the opening in the end of the pole pocket at the top of the graphic panel.



7. Slide the top pole through the pole pocket and into the top connector



8. Pull the graphic over the end of the pole.



9. Slide the vertical pole onto the ground stake and you are finished!