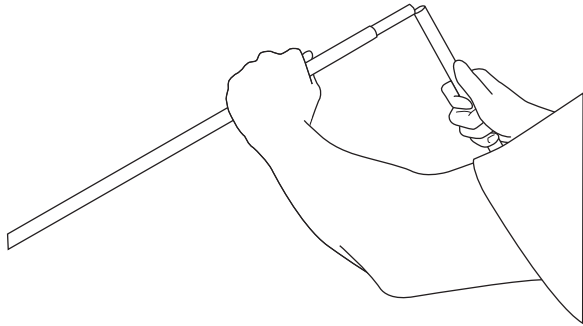
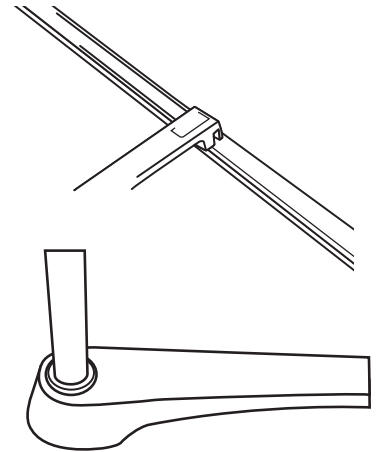


SET UP INSTRUCTION

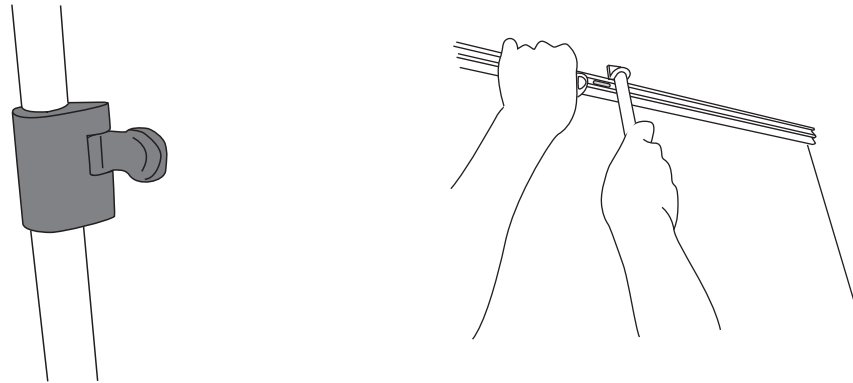
1. Unfold the hybrid pole.



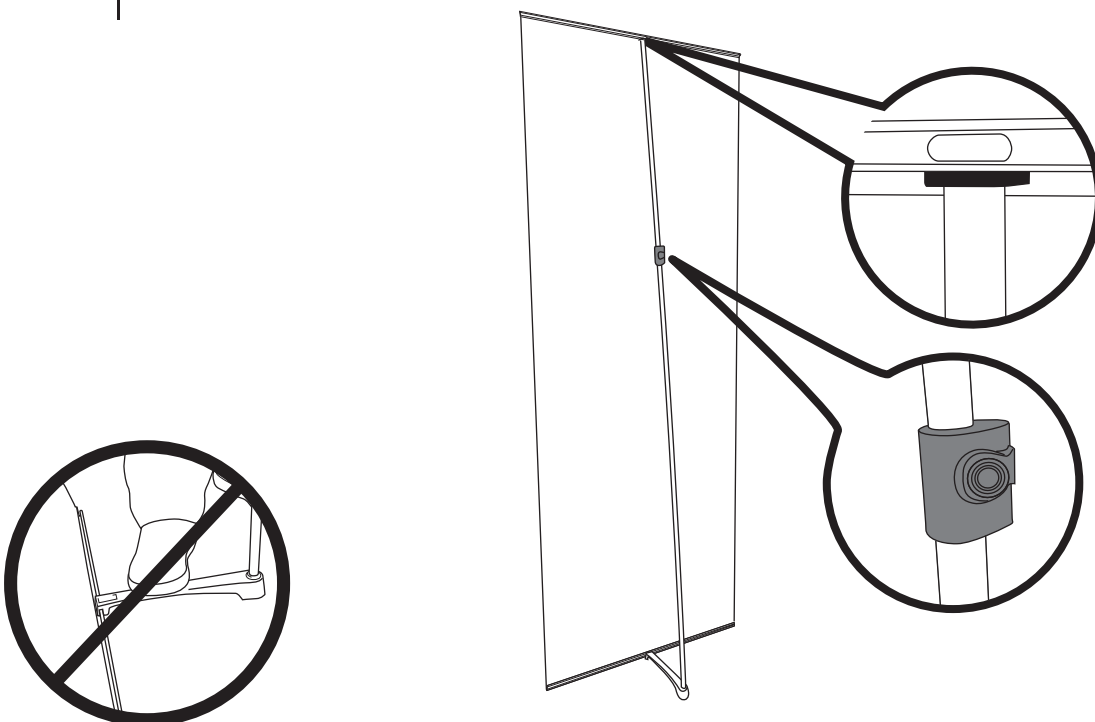
2. Lock the foot onto the slot of the bottom profile. Insert the pole onto the cup of the foot.



3. Unsnap the lock of adjustable pole and fit the endtip of the adjustable pole to the slot of the top profile.



4. Extend the adjustable pole to desired height and snap the lock tightly closed.



CAUTION: Do not step on the foot!