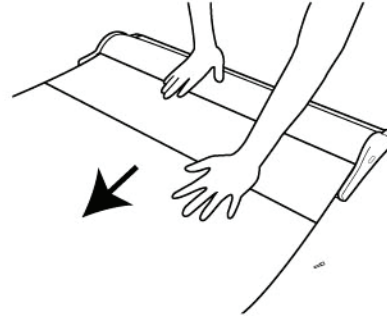
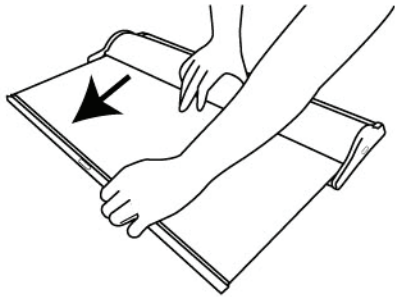


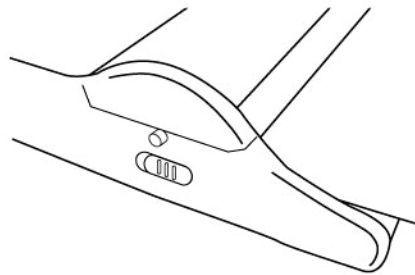
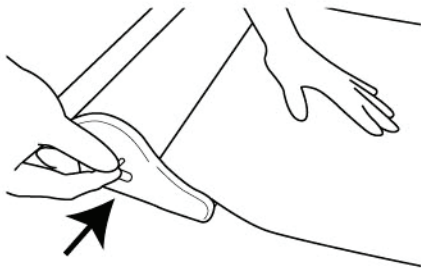
# CHANGING GRAPHIC

Supreme  
SPACE

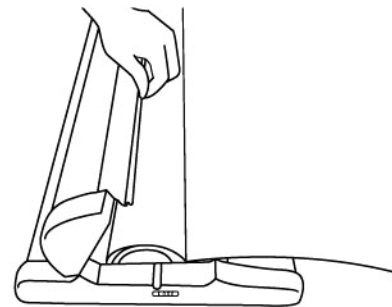
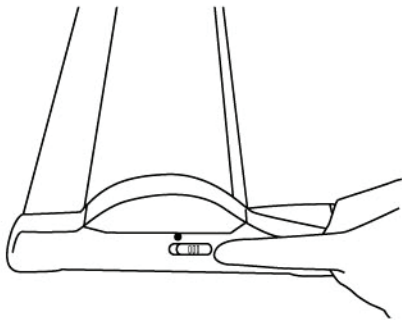
1. Pull out the graphic entirely.



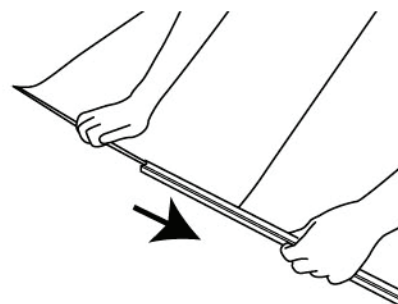
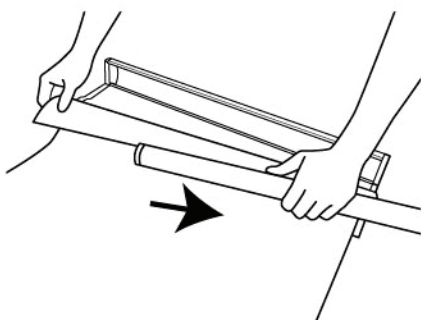
2. Stop the roller by inserting the pin into the hole on the right end plate completely.



3. Click the buttons at both ends to open the cover of the stand.



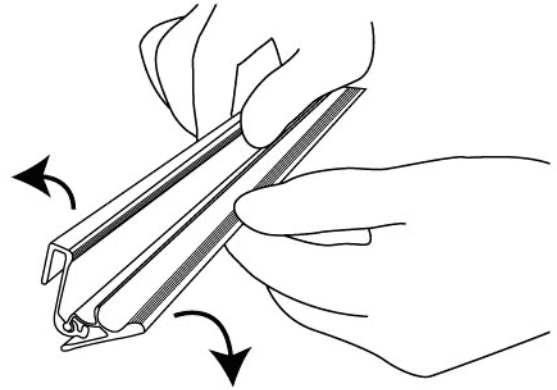
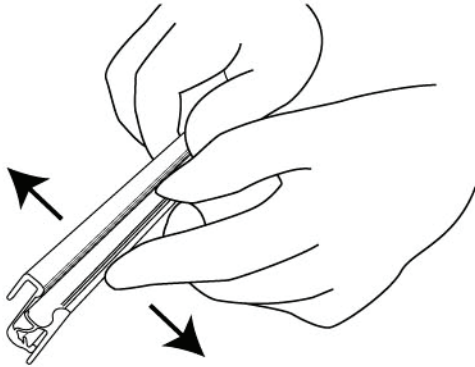
4. Slide the graphic out from the internal roller and the top profile, then follow the steps on "mounting graphic" instruction to install a new graphic.



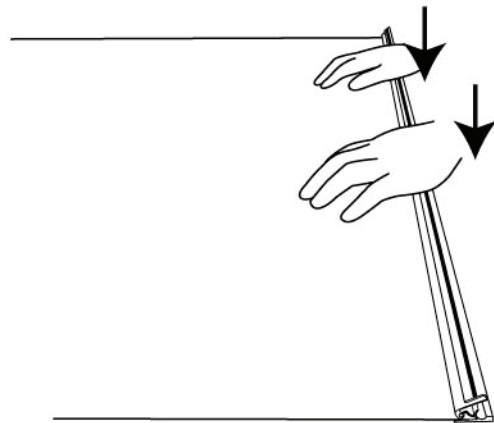
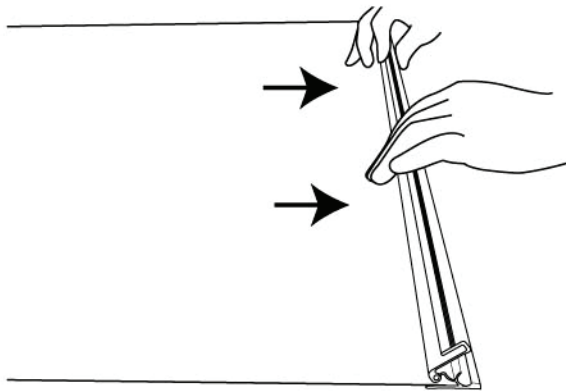
# **MOUNTING GRAPHIC**

## **With Snap Profile and Snap Roller (P.1)**

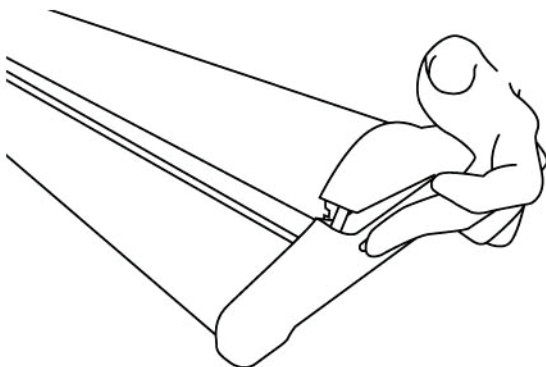
1. Open the snap profile near the end without any tools.



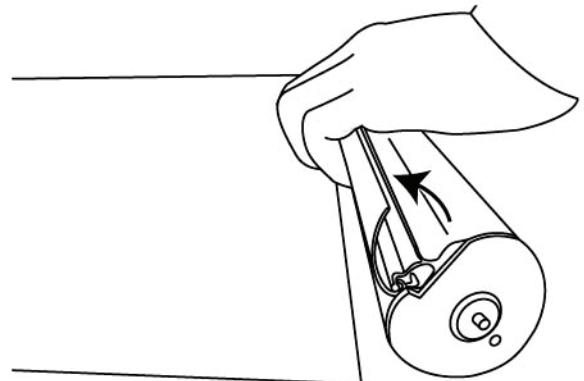
2. Insert the graphic into the profile and press hard.



3. Open the cover by clicking at the two buttons at both ends and take out the internal roller.



4. Open the snap roller.

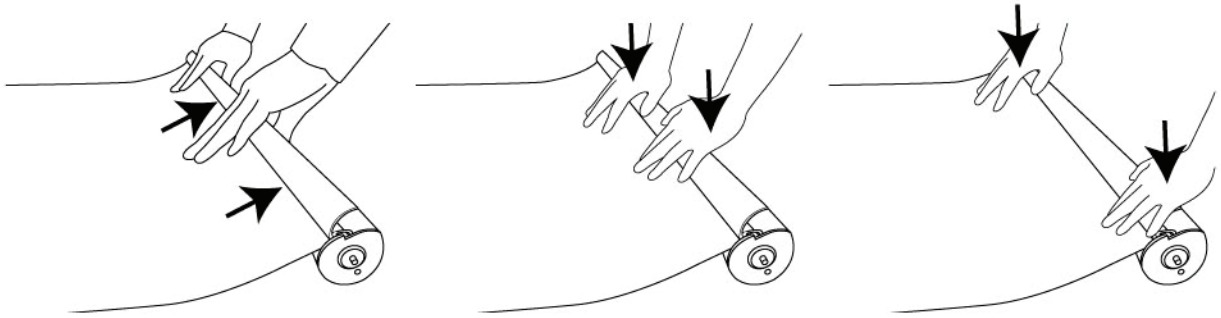


# MOUNTING GRAPHIC

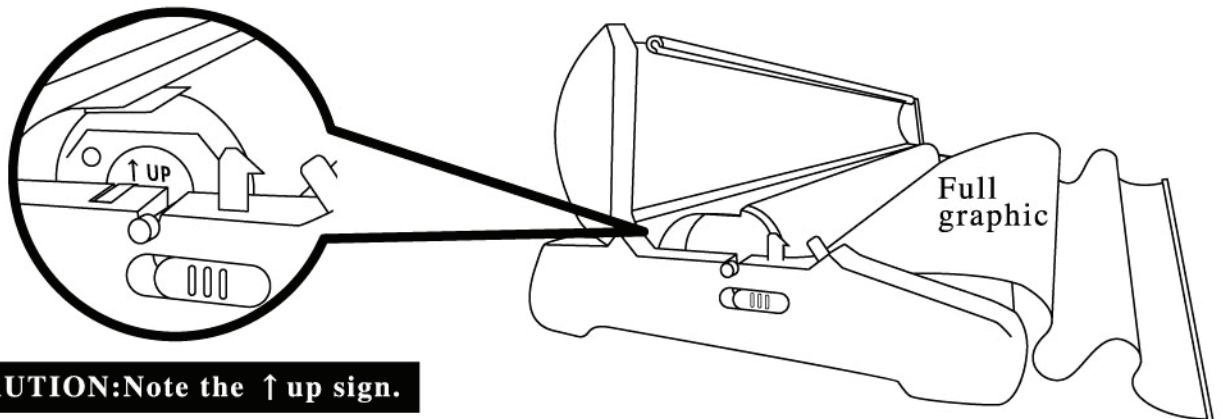
## With Snap Profile and Snap Roller (P.2)

5. Insert the graphic into the snap roller and press hard along the entire roller until it's firm.

**IMPORTANT!**



6. Return the roller with graphic into the base. Let the entire graphic lay outside the base. Close the cover.



7. Push the graphic forward slightly to activate the spring system. Remove the locking pin and let the graphic retract into the system slowly.

