

Linear Tabletop Display Kits



The Linear System provides the looks, style and sophistication of a semi-custom exhibit with the ease, convenience and value for money trade price that you're looking for. The Linear range of portable exhibits is designed to ship with minimal lead time and is a terrific "off the shelf" solution for tradeshow and semi-permanent displays.

Features & Benefits

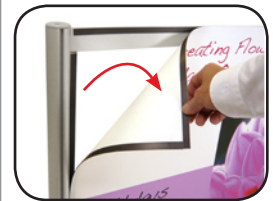
"Off the shelf" quick ship availability

Kit includes choice of 2 low voltage lights, hex tool and case

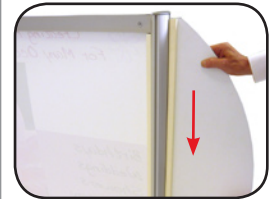
Lightweight, modular aluminum frame construction

UPS shippable cases

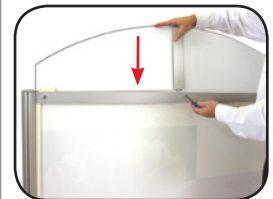
Graphic Attachment



Magnetic Graphics



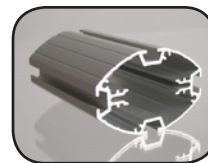
Wing Graphics



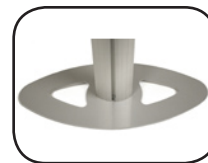
Graphic Header



Tabletop Frame



75mm Oval Extrusion



Oval Steel Base

Hardware Specifications

Color: Silver

Weight of Unit: 30 lbs.

Footprint of Unit: 74"w x 16"d without lights

Height of Display: 55" without lights

Graphic Dimensions

Please use available templates when setting up artwork.

Center Graphic

Total size w/bleed: 47"w x 43"h
Trim size: 46"w x 42"h

Left and Right Wings

Total size w/bleed: 13"w x 43"h
Trim size: 12"w x 42"h

Header

Total size w/bleed: 46"w x 12"h
Trim size: 45"w x 11"h

Additional Info

Shipping Size: 50" x 28" x 12"

Shipping Weight: 55 lbs.

Case: Molded OCH Case

Assembly Instructions

Linear Tabletop Parts Include:



(2) Oval Steel Bases



(2) Clear PVC Washers



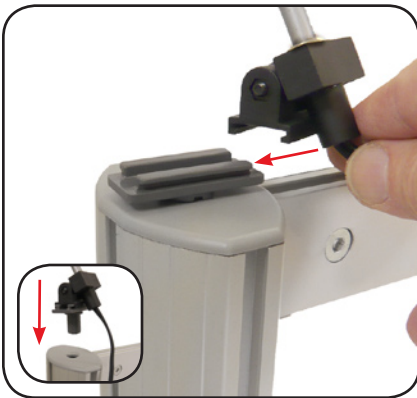
(1) Allen Key Set



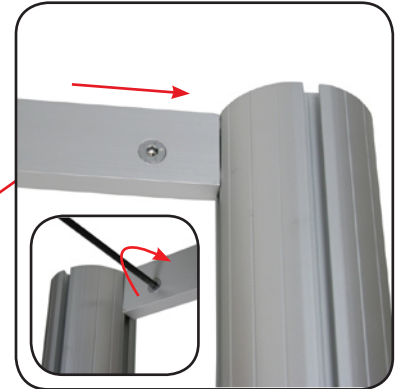
(2) Vertical Extrusions



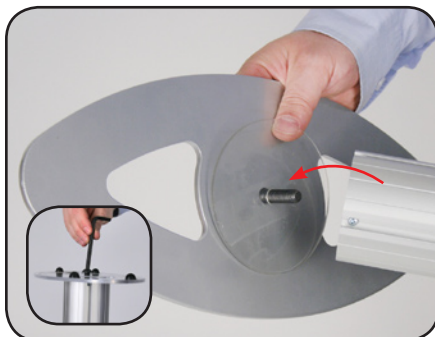
(2) Horizontal Extrusions/Graphic Rails



Optional lights can be added to the display.



Attach top and bottom horizontal extrusions to the vertical uprights using the installed lock and the supplied hex key.



Base units are shipped attached. If the base becomes loose during the life of the product, use the hex key to tighten the bolt on the underside of the unit.



Attach top and bottom horizontal extrusions to the vertical uprights using the installed lock and the supplied hex key.