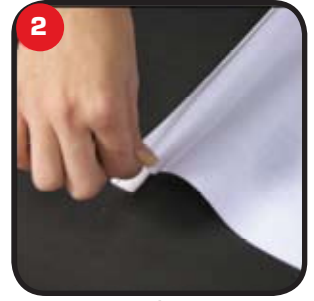


Assembly Instructions

Graphic Application



1 Remove paper backing from the tape on the graphic rail.



2 Hover top of the graphic over the graphic rail to line up the graphic and graphic rail. (Front of graphic attaches to graphic rail)



3 Remove 1 end cap from the top rail extrusion (bottom rail has legs)



4 Fold graphic rail in front of graphic 1 half turn and slide into top extrusion.



5 Replace end cap (repeat steps 1-5 for bottom section of the graphic)

Unit Instructions



1 Insert and secure 1 pole arm into the weighted foot.



2 Insert and secure 1 pole arm into the bottom rail extrusion.



3 Bring together both pole arms and attach to the bottom of the telescopic pole.



4 Insert and secure another pole arm onto the top of the telescopic pole.



5 Insert and secure the top graphic rail extrusion to the top pole arm.



6 Unlock telescopic pole and extended, then lock when at desired height.

Repeat steps in reverse to retract and Store