

# Wind Sign

## HARDWARE PROVIDED

## ASSEMBLY INSTRUCTIONS

- 2 Bolts
- 2 Washers
- 1 Allen Wrench
- 2 Sign Clips
- 2 Screws for Sign Clips

### STEP A

1. Take Allen wrench and tighten set screw inside silver collar on spring shaft.

### STEP B

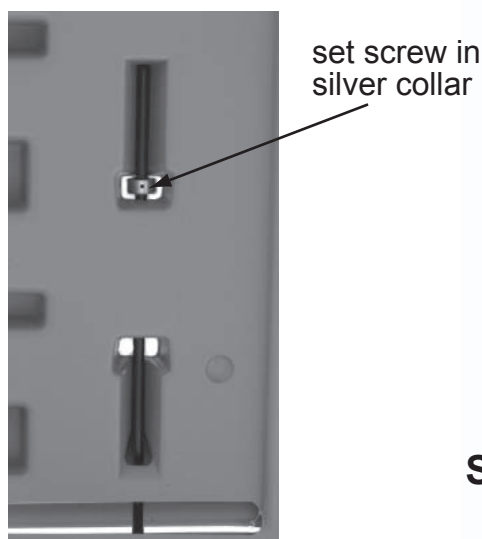
1. With sign stand on it's side, line up the base with the bottom of the springs.
2. Put a washer on a bolt and push through one of the holes at the bottom of the base. Tighten spring and bolt securely.
3. Repeat with second washer, bolt, and spring.
4. Turn Wind Sign right side up, remove fill hole cap from base and fill with sand or water. Play sand is recommended for ease of filling. Water may be used at temperatures above freezing.



### STEP C

1. As an option, after you have placed your signs in the frame, you can place one sign clip in the middle of each side to secure the signs. These clips can also be screwed into the sides of the frame.

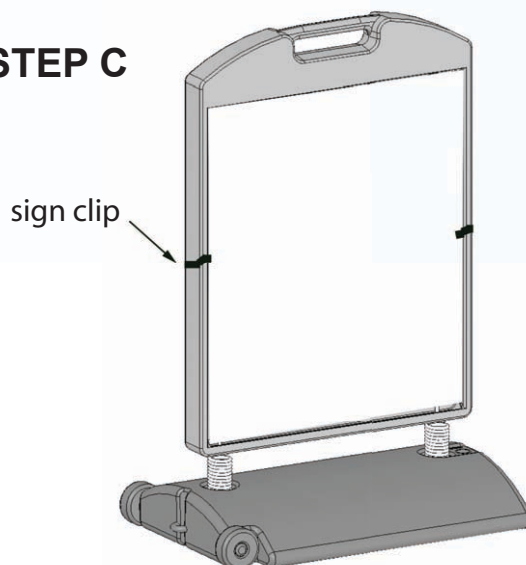
### STEP A



### STEP B



### STEP C



**PLASTICADE®**